

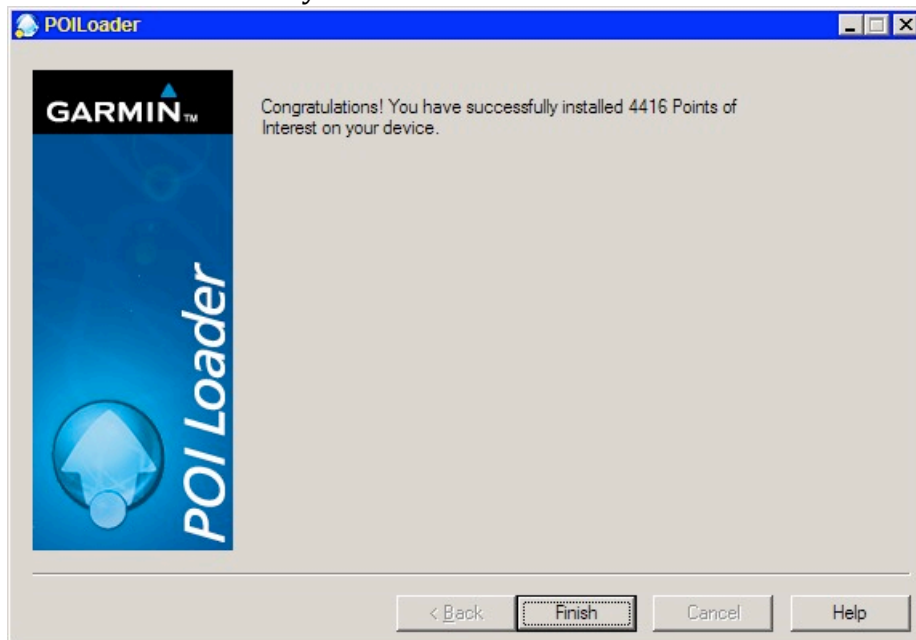


7) Select “Install new custom POIs onto your device” and click Next

8) Click the Browse button and select your POI folder (e.g. “My Documents/POI/”). Select “Feet and MPH” as units and “Express (Recommended)” for the loading mode and click Next.

Note: More advanced users can select the “Manual” loading mode and configure advanced options (e.g. proximity alerts).

9) After a short wait, the final screen should be displayed. Click Finish to exit. The POI has been successfully loaded.



10) Unplug your Garmin from your computer. Your Garmin will now load as if you'd just turned it on. You're now ready to navigate to Britain's real-ale breweries and best real ale pubs!

POST-INSTALLATION SETUP

Once you have copied the POI files from your computer onto your Garmin, there is no further setting-up to do.

USE

Once you have followed the steps above, your Garmin device will display its main menu.

For full details of how to browse and navigate to Points of Interest (POIs) on your Garmin you should consult the owner's manual that came with the device. To ensure that you can use basic POI navigation functionality, here are some helpful instructions:

If you wish to select a pub or brewery near your current location

This allows you to browse the details of any GBG POI anywhere and along any planned route, whether to a GBG POI or not. The exact process may be different for some Garmin devices.

1) Click "Where To?" on the main menu. Click "My Locations", then click "Custom POIs".

Note: On some Garmin models, the "Custom POIs" is under the "Extras", rather than "My Locations".

2) A list of all the pubs and breweries in your locality is displayed. Use the up and down arrows to find the pub and click on it to select it.

Please note: If you have multiple POI files installed on your Garmin, you will be prompted to select the POI file to use before you see the list of pubs or breweries – select the "GBG2018" POI.

3) The pubs' and breweries' details will be displayed (Pub Name, Town, Postcode and Telephone Number).

4) Click the "Map" button, if you wish to see the pub or brewery in its locality. After you've finished looking at the map, click the "Back" button. A view of the map screen is show below:



- 5) Click the “Go!” button.
- 6) Your Garmin will now navigate you to your selected pub.

If you wish to select a POI location near your destination or current route

- 1) Click “Where to?” on the main menu. Click the “Near...” button at the bottom of the screen.
- 2) Select “My Current Route”, “My Destination” or other option, as desired, and click the OK button.
- 3) Click “My Locations” followed by “Custom POIs”
- 4) A list of all the POIs in your locality is displayed. Use the up and down arrows to find the pub and click on it to select it.
- 5) The POI details will be displayed (Pub Name, Town, Postcode and Telephone Number). Click the “Go!” button.
- 6) You will be prompted whether you wish to “Insert in Route as Via Point?”. Selecting “No” will navigate you to your selected pub. Selecting “Yes” will navigate you to your destination via the selected pub.

SUPPORT

If, after following the instructions above, you experience any difficulties installing and using the file, you can contact CAMRA for help at:
gbgpoi@camra.org.uk

We are especially interested to hear if you find a pub or brewery in completely the wrong location and if you find any other errors. If you do find you a serious error (e.g. a missing pub or brewery, an incorrect postcode or a wildly wrong

Version 5: 14 September 2017

location), which is subsequently confirmed, we will send you a free update to your current GBG POI file when an update is next published.

A Yahoo Group has been set up for CAMRA members who may wish to become involved in making their own POI files and helping to improve the GBG POI file. This can be joined via the website

<http://uk.groups.yahoo.com/group/camrapoi/>