



Good Beer Guide satellite navigation POI files for Garmin devices: Instructions for installation and use

IMPORTANT: Compatibility

The Garmin version of the current GBG POI file (GBG2017) is, to CAMRA's best knowledge, compatible with all portable Garmin sat-nav devices. Alternative versions of the GBG POI compatible with other sat-nav systems (TomTom and Navman) are also available. Please check the CAMRA website: www.camra.org.uk/gbg-sat-nav

IMPORTANT: Device Resources

Before attempting to load the GBG POI file onto your sat-nav device, you should ensure that there is enough space on your device to do so (the GBG POI file requires approximately 300kB of space on your device). Some devices are also limited in the number of POI locations which they can support. For more information on the specifications of your device, please refer to its documentation.

IMPORTANT: Terms and Conditions

Before installing and using the GBG POI file, you should read the accompanying GBG POI Agreement & Terms. By proceeding, you agree to be bound by their conditions.

IMPORTANT: Drink Driving



The GBG POI aims to assist users in getting to Britain's best pubs and breweries (by car, motorbike, bicycle and foot), and it does not condone drink driving. You cannot calculate your alcohol limit, so don't try. If drinking alcohol, a non-drinker should be designated to drive you home. Alternatively, you could call a taxi, use public transport or walk home.

GARMIN INSTALLATION

Once you have downloaded the GBG POI and un-zipped it into a folder onto your computer, the easiest way to copy the necessary files onto your sat-nav device is by following the few simple steps given below.

IMPORTANT: Pubs and Breweries:

Please note that the POI information for pubs and breweries is contained in two separate data files, and each set of information is represented on the sat-nav screen

by a different symbol: Pubs by  and breweries by . Therefore, you will

need to install the .csv (data) and .bmp (symbol) files for both the pubs and breweries sub-folders onto your device in order for the GBG POI to function fully.

1) If you do not already have it installed, download and install Garmin “POI Loader” from <http://www8.garmin.com/products/poiloader/>. POI loader is available for both PC and Mac.

2) If you already had POI Loader installed, you may have already chosen a folder to load your custom POIs from. If you don’t have a folder for your custom POIs, create one now. For the purposes of these instructions, the folder “My Documents/POI/” will be used.

3) Copy the POI files (GBG2017.csv, Breweries.csv, GBG2017.bmp and Breweries.bmp) into your POI folder.

NOTE: It is recommended that you delete any existing GBG files to ensure the latest data is used and to avoid confusion.

4) Plug your Garmin device into your computer using your USB cable. It should turn on automatically and, after a few seconds, show a screen with a sat-nav device connected to a computer.

4) Run POI Loader. The following screen will appear:



5) Click Next. Select “Garmin Device” on the next screen before clicking Next again.

6) Wait until device details appear in the details box. If the details don’t appear within 15 seconds, click the “Find Device” button. Once your device is found, click Next.

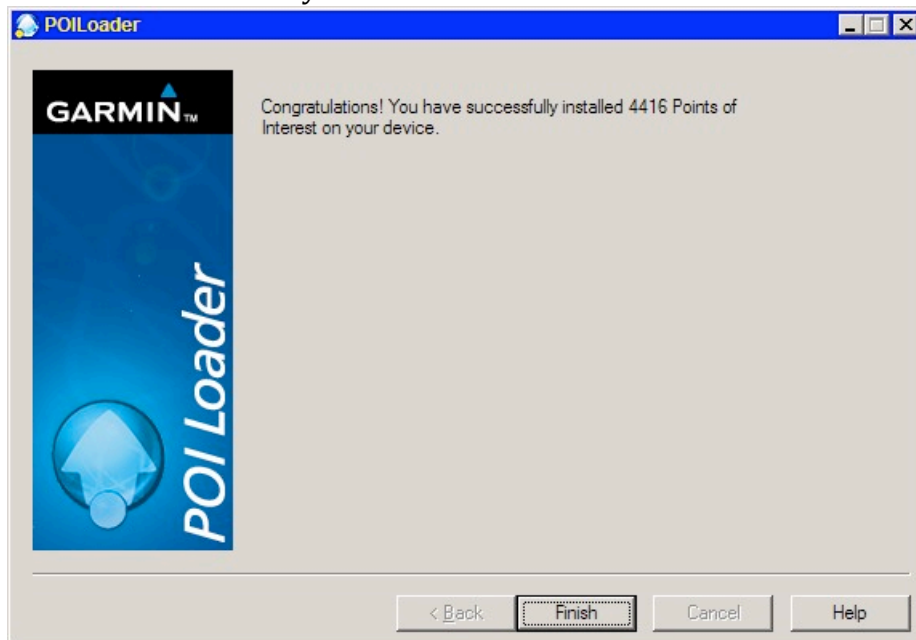


7) Select “Install new custom POIs onto your device” and click Next

8) Click the Browse button and select your POI folder (e.g. “My Documents/POI/”). Select “Feet and MPH” as units and “Express (Recommended)” for the loading mode and click Next.

Note: More advanced users can select the “Manual” loading mode and configure advanced options (e.g. proximity alerts).

9) After a short wait, the final screen should be displayed. Click Finish to exit. The POI has been successfully loaded.



10) Unplug your Garmin from your computer. Your Garmin will now load as if you'd just turned it on. You're now ready to navigate to Britain's real-ale breweries and best real ale pubs!

POST-INSTALLATION SETUP

Once you have copied the POI files from your computer onto your Garmin, there is no further setting-up to do.

USE

Once you have followed the steps above, your Garmin device will display its main menu.

For full details of how to browse and navigate to Points of Interest (POIs) on your Garmin you should consult the owner's manual that came with the device. To ensure that you can use basic POI navigation functionality, here are some helpful instructions:

If you wish to select a pub or brewery near your current location

This allows you to browse the details of any GBG POI anywhere and along any planned route, whether to a GBG POI or not. The exact process may be different for some Garmin devices.

1) Click "Where To?" on the main menu. Click "My Locations", then click "Custom POIs".

Note: On some Garmin models, the "Custom POIs" is under the "Extras", rather than "My Locations".

2) A list of all the pubs and breweries in your locality is displayed. Use the up and down arrows to find the pub and click on it to select it.

Please note: If you have multiple POI files installed on your Garmin, you will be prompted to select the POI file to use before you see the list of pubs or breweries – select the "GBG2017" POI.

3) The pubs' and breweries' details will be displayed (Pub Name, Town, Postcode and Telephone Number).

4) Click the "Map" button, if you wish to see the pub or brewery in its locality. After you've finished looking at the map, click the "Back" button. A view of the map screen is show below:



- 5) Click the “Go!” button.
- 6) Your Garmin will now navigate you to your selected pub.

If you wish to select a POI location near your destination or current route

- 1) Click “Where to?” on the main menu. Click the “Near...” button at the bottom of the screen.
- 2) Select “My Current Route”, “My Destination” or other option, as desired, and click the OK button.
- 3) Click “My Locations” followed by “Custom POIs”
- 4) A list of all the POIs in your locality is displayed. Use the up and down arrows to find the pub and click on it to select it.
- 5) The POI details will be displayed (Pub Name, Town, Postcode and Telephone Number). Click the “Go!” button.
- 6) You will be prompted whether you wish to “Insert in Route as Via Point?”. Selecting “No” will navigate you to your selected pub. Selecting “Yes” will navigate you to your destination via the selected pub.

SUPPORT

If, after following the instructions above, you experience any difficulties installing and using the file, you can contact CAMRA for help at:
gbgpoi@camra.org.uk

We are especially interested to hear if you find a pub or brewery in completely the wrong location and if you find any other errors. If you do find you a serious error (e.g. a missing pub or brewery, an incorrect postcode or a wildly wrong

Version 4: 14 September 2016

location), which is subsequently confirmed, we will send you a free update to your current GBG POI file when an update is next published.

A Yahoo Group has been set up for CAMRA members who may wish to become involved in making their own POI files and helping to improve the GBG POI file. This can be joined via the website

<http://uk.groups.yahoo.com/group/camrapoi/>